

Management of therapeutic anticoagulation in patients with intracerebral haemorrhage and mechanical heart valves

Joji B. Kuramatsu^{1†}, Jochen A. Sembill^{1†}, Stefan T. Gerner¹, Maximilian I. Sprügel¹, Manuel Hagen¹, Sebastian S. Roeder¹, Matthias Endres^{2,3,4,5}, Karl Georg Haeusler^{2,3}, Jan Sobesky^{2,3}, Johannes Schurig³, Sarah Zweynert², Miriam Bauer³, Peter Vajkoczy⁶, Peter A. Ringleb⁷, Jan Purrucker⁷, Timolaos Rizos⁷, Jens Volkmann⁸, Wolfgang Müllges⁸, Peter Kraft⁸, Anna-Lena Schubert⁸, Frank Erbguth⁹, Martin Nueckel⁹, Peter D. Schellinger¹⁰, Jörg Glahn¹⁰, Ulrich J. Knappe¹¹, Gereon R. Fink¹², Christian Dohmen¹², Henning Stetefeld¹², Anna Lena Fisse¹³, Jens Minnerup¹³, Georg Hagemann¹⁴, Florian Rakers¹⁴, Heinz Reichmann¹⁵, Hauke Schneider¹⁵, Sigrid Wöpping¹⁵, Albert Christian Ludolph¹⁶, Sebastian Stösser¹⁶, Hermann Neugebauer¹⁶, Joachim Röther¹⁷, Peter Michels¹⁷, Michael Schwarz¹⁸, Gernot Reimann¹⁸, Hansjörg Bänzner¹⁹, Henning Schwert¹⁹, Joseph Claßen²⁰, Dominik Michalski²⁰, Armin Grau²¹, Frederick Palm²¹, Christian Urbanek²¹, Johannes C. Wöhrle²², Fahid Alshammari²², Markus Horn²³, Dirk Bahner²³, Otto W. Witte²⁴, Albrecht Günther²⁴, Gerhard F. Hamann²⁵, Hannes Lücking²⁶, Arnd Dörfler²⁶, Stephan Achenbach²⁷, Stefan Schwab¹, and Hagen B. Huttner^{1*†}

¹Department of Neurology, University of Erlangen-Nuremberg, Schwabachanlage 6, Erlangen 91054, Germany; ²Department of Neurology, Charité—Universitätsmedizin Berlin, corporate member of Freie Universität Berlin, Humboldt-Universität zu Berlin, and Berlin Institute of Health, Charitéplatz 1, Berlin 10117, Germany; ³Center for Stroke Research Berlin, Charité—Universitätsmedizin Berlin, Charitéplatz 1, Berlin 10117, Germany; ⁴German Centre for Cardiovascular Research (DZHK), Oudenarder Straße 16, Berlin 13347, Germany; ⁵German Center for Neurodegenerative Diseases (DZNE), partner site Berlin, Charitéplatz 1, Berlin 10117, Germany; ⁶Department of Neurosurgery, Charité—Universitätsmedizin Berlin, Augustenburger Platz 1, Berlin 13353, Germany; ⁷Department of Neurology, Heidelberg University Hospital, INF 400, Heidelberg 69120, Germany; ⁸Department of Neurology, University of Würzburg, Josef-Schneider-Straße 11, Würzburg 97080, Germany; ⁹Department of Neurology, Community Hospital Nuremberg, Breslauer Str. 201, Nuremberg 90471, Germany; ¹⁰Department of Neurology and Neurogeriatrics, Johannes Wesling Medical Center Minden, UK RUB, Hans-Nolte-Str. 1, Minden 32429, Germany; ¹¹Department of Neurosurgery, Johannes Wesling Medical Center Minden, UK RUB, Hans-Nolte-Str. 1, Minden 32429, Germany; ¹²Department of Neurology, University of Cologne, Kerpener Str. 62, Cologne 50937, Germany; ¹³Department of Neurology, University of Münster, Albert-Schweitzer-Campus 1, Münster 48149, Germany; ¹⁴Department of Neurology, Community Hospital Helios Klinikum Berlin-Buch, Schwanebecker Chaussee 50, Berlin 13125, Germany; ¹⁵Department of Neurology, University of Dresden, Fetscherstr. 74, Dresden 01307, Germany; ¹⁶Department of Neurology, University of Ulm, Oberer Eselsberg 45, Ulm 89081, Germany; ¹⁷Department of Neurology, Community Hospital Asklepios Klinik Hamburg Altona, Paul Ehrlich-Strasse 1, Hamburg 22763, Germany; ¹⁸Department of Neurology, Community Hospital Klinikum Dortmund, Beurhausstraße 40, Dortmund 44137, Germany; ¹⁹Department of Neurology, Community Hospital Klinikum Stuttgart, Kriegsbergstrasse 60, Stuttgart 70174, Germany; ²⁰Department of Neurology, University of Leipzig, Liebigstr. 20, Leipzig 04103, Germany; ²¹Department of Neurology, Community Hospital Klinikum der Stadt Ludwigshafen am Rhein, Bremerstraße 79, Ludwigshafen 67063, Germany; ²²Department of Neurology, Community Hospital Klinikum Koblenz, Kardinal-Krementsz-Str. 1-5, Koblenz 56073, Germany; ²³Department of Neurology, Community Hospital Bad Hersfeld, Seilerweg 29, Bad Hersfeld 36251, Germany; ²⁴Department of Neurology, University of Jena, Erlanger Allee 101, Jena 07747, Germany; ²⁵Department of Neurology and Neurological Rehabilitation, Bezirkskrankenhaus Günzburg, Ludwig-Heilmeyer-Straße 2, 89312 Günzburg, Germany; ²⁶Department of Neuroradiology, University of Erlangen-Nuremberg, Schwabachanlage 6, Erlangen 91054, Germany; and ²⁷Department of Cardiology, University of Erlangen-Nuremberg, Ulmenweg 18, Erlangen 91054, Germany

* Corresponding author. Tel: +49 9131 8544523, Fax: +49 9131 8536597, Email: Hagen.Huttner@uk-erlangen.de

† These authors contributed equally to this work.

‡ For the “German-wide multicenter analysis of oral anticoagulation-associated intracerebral hemorrhage” (RETRACE I + II) investigators on behalf of the “Initiative of German NeuroIntensive Trial Engagement” (IGNITE).

© The Author(s) 2018. Published by Oxford University Press on behalf of the European Society of Cardiology.

This is an Open Access article distributed under the terms of the Creative Commons Attribution Non-Commercial License (<http://creativecommons.org/licenses/by-nc/4.0/>), which permits non-commercial re-use, distribution, and reproduction in any medium, provided the original work is properly cited. For commercial re-use, please contact journals.permissions@oup.com

Received 16 August 2017; revised 3 November 2017; editorial decision 23 January 2018; accepted 24 January 2018

Aims

Evidence is lacking regarding acute anticoagulation management in patients after intracerebral haemorrhage (ICH) with implanted mechanical heart valves (MHVs). Our objective was to investigate anticoagulation reversal and resumption strategies by evaluating incidences of haemorrhagic and thromboembolic complications, thereby defining an optimal time-window when to restart therapeutic anticoagulation (TA) in patients with MHV and ICH.

Methods and results

We pooled individual patient-data ($n = 2504$) from a nationwide multicentre cohort-study (RETRACE, conducted at 22 German centres) and eventually identified MHV-patients ($n = 137$) with anticoagulation-associated ICH for outcome analyses. The primary outcome consisted of major haemorrhagic complications analysed during hospital stay according to treatment exposure (restarted TA vs. no-TA). Secondary outcomes comprised thromboembolic complications, the composite outcome (haemorrhagic and thromboembolic complications), timing of TA, and mortality. Adjusted analyses involved propensity-score matching and multivariable cox-regressions to identify optimal timing of TA. In 66/137 (48%) of patients TA was restarted, being associated with increased haemorrhagic (TA = 17/66 (26%) vs. no-TA = 4/71 (6%); $P < 0.01$) and a trend to decreased thromboembolic complications (TA = 1/66 (2%) vs. no-TA = 7/71 (10%); $P = 0.06$). Controlling treatment crossovers provided an incidence rate-ratio [hazard ratio (HR) 10.31, 95% confidence interval (CI) 3.67–35.70; $P < 0.01$] in disadvantage of TA for haemorrhagic complications. Analyses of TA-timing displayed significant harm until Day 13 after ICH (HR 7.06, 95% CI 2.33–21.37; $P < 0.01$). The hazard for the composite—balancing both complications, was increased for restarted TA until Day 6 (HR 2.51, 95% CI 1.10–5.70; $P = 0.03$).

Conclusion

Restarting TA within less than 2 weeks after ICH in patients with MHV was associated with increased haemorrhagic complications. Optimal weighing—between least risks for thromboembolic and haemorrhagic complications—provided an earliest starting point of TA at Day 6, reserved only for patients at high thromboembolic risk.

Keywords

Intracerebral haemorrhage • Mechanical heart valve • Therapeutic anticoagulation

Introduction

Anticoagulation management in patients with acute intracerebral haemorrhage (ICH) and mechanical heart valves (MHVs) who require long-term oral anticoagulation (OAC) represents a growing therapeutic dilemma.^{1–4} During the hyper-acute phase of ICH, altered coagulation needs to be normalized as soon as possible to stabilize the haematoma,^{5,6} specifically by administering prothrombin complex concentrates to reduce international normalized ratio (INR) levels at least to less than 1.3.^{5,6} As a consequence of normalizing coagulation, the risk for thromboembolism is increased, which is why anticoagulation management in MHV-patients is intensely debated.⁷

International guidelines state that ‘early resumption of anticoagulation may be necessary’, without providing specific recommendations on safety and timing.^{8–11} This reflects an essential lack of randomized trials or sufficiently-sized observational studies exploring the optimal time-point for OAC re-initiation.^{9,11,12} Yet, a recent consensus statement by the European Society of Cardiology Working Group on Thrombosis suggested that anticoagulation with heparin may be safely restarted 3 days after ICH and that vitamin-K antagonists (VKAs) may be initiated at Day 7 without any major concerns for bleeding complications.¹³ However, this conclusion was based on a meta-analysis of small observational studies, the largest including on 52 MHV-patients of which 22 died.^{13,14} Hence, available analyses and data quality seems inadequate to draw firm conclusions, notably as

none of the included studies was designed to investigate and compare strategies of restarting anticoagulation.¹⁵

The present nation-wide multicentre study pooled individual data of patients with OAC-associated ICH and MHV to investigate both anticoagulation reversal and anticoagulation-resumption by providing incidences of haemorrhagic vs. thromboembolic complications among patients with and without restarted therapeutic anticoagulation (TA). We aimed to establish an optimal time-window for restarting TA in MHV-patients with acute ICH using time-dependent safety and risk-benefit analyses.

Methods

Study design and participants

This observational cohort study represents a combined analysis of both parts of the registered (‘german-wide multicenter Analysis of oral Anticoagulation associated intraCerebral hEmorrhage’) RETRACE-program; Part-1 conducted from 1 January 2006 until 31 December 2010 (NCT01829581)⁵ and Part-2 from 1 January 2011 until 31 December 2015 (NCT03093233). We integrated pooled individual patient data of 2504 consecutive OAC-ICH patients treated at 22 tertiary-care centres (Departments of Neurology) throughout Germany. We defined MHV-patients by having a MHV (i.e. bi-leaflet, single-leaflet, tilting disc, or caged-ball) *in situ* during occurrence of ICH and recorded valve positions (aortic, mitral, or both).⁷ Patients with exclusively bioprosthetic valves were not

classified as MHV patients. In all patients with VKA-related ICH an effective intake was determined as INR-value equal or greater to 1.5 on hospital admission. We excluded patients with secondary ICH aetiologies, as previously described.⁵ For analyses of reversal management, we did not consider patients with early care limitation (withhold or withdrawal of therapy orders within 24 h).^{5,16} For analyses of anticoagulation management, we implemented a 72 h 'quarantine period', as previously suggested, to limit false positive attribution of treatment exposures with outcomes.¹⁷ The study was approved by the local ethics committees and institutional review boards based on the central vote from Friedrich-Alexander-University Erlangen-Nuremberg, Germany (Re.No-4409 & 30_16B). Individual consent was obtained from patients or legal representatives if not waived by local ethics committees.

Data acquisition

We assessed data on demographics, prior medical history, in-hospital and imaging parameters, laboratory data and reversal management (timing, doses, and agents used for reversal treatment) as previously described.⁵ Pre-existing comorbidities comprised arterial hypertension, diabetes mellitus, abnormal kidney or liver function, prior myocardial infarction, congestive heart failure, history of stroke, and antiplatelet medication, which were used to compute values for the CHADS₂ and HAS-BLED scores. Clinical status on admission was obtained using the Glasgow Coma Scale (GCS) as noted in prospective data bases, medical charts, and emergency protocols. Severity of ICH was assessed using the most commonly used prognostic Scale, i.e. ICH Score (higher scores indicating poorer outcome).^{16,18} Laboratory parameters on admission and serial coagulation parameters [activated partial thromboplastin time (aPTT), INR] were recorded using institutional laboratory databases.

Diagnosis of ICH and imaging characteristics were determined on first-available cranial imaging after onset of ICH. Intracerebral haemorrhage volume was calculated using the ABC/2 and ABC/3 methods,¹⁹ haematoma growth was defined as greater 33% volume increase,²⁰ and all serial follow-up imaging during the complete hospital stay were evaluated for detection of outcome measures in each patient.⁵ For analyses of reversal management, we dichotomized patients into sufficiently (INR-level reversed to less than 1.3 within at least 4 h) or non-sufficiently reversed, as previously established.⁵

Timing and mode of anticoagulation management during hospital stay were categorized into (i) no-TA, i.e. either no antithrombotic medication received during hospital stay or administration of heparins [unfractionated heparin, low molecular weight heparins (LMWH)] in prophylactic dosing for prevention of venous thromboembolism (VTE)²¹ or into (ii) TA, i.e. either restarted OAC using VKA (scored on first day with INR levels ≥ 1.5), continuous intravenous or subcutaneous application of unfractionated heparin (targeting a therapeutic range of 1.5-fold to 2.5-fold aPTT prolongation) or full weight-adjusted dosing of LMWH (targeting 0.5 to 1.0 anti-Xa units/mL).^{18,22} Dichotomous treatment exposure was classified according to the most aggressive anticoagulation therapy received.

We addressed crossover between treatment groups by calculating incidence rates per patient days for each day on specific treatment until the occurrence of complications or discharge. Complications consisted of intra- or extracranial haemorrhagic and thromboembolic events (details see below), which were serially evaluated and corroborated by pertinent medical charts, physicians' letters, and imaging or echocardiography reports review during the entire hospital stay.²³ Complications were adjudicated to treatment exposure (TA vs. no-TA), which was present at the day of clinical diagnosis of haemorrhagic and thromboembolic complications.

Investigated outcomes

Primary outcome

We defined major haemorrhagic complications as primary safety outcome measure consisting of (i) any intracranial haemorrhage, i.e. new ICH distant from the initial haematoma, any delayed haematoma enlargement $>33\%$ occurring beyond the 72 h quarantine period, and new subarachnoid or sub-/epidural haemorrhage, as well as (ii) any major extracranial haemorrhage, i.e. acute (<24 h) reduction of serum haemoglobin ≥ 3 g/dL, transfusion ≥ 2 units packed red blood cells, bleeding in critical site (intraspinal, intraocular, pericardial, articular, retroperitoneal), or fatal bleeding according to Bleeding Academic Research Consortium Type 3a or greater.²³ Outcome measures in all patients were recorded during the entire acute hospitalization period.

Secondary outcomes

Secondary outcomes included (i) thromboembolic complications, (ii) the composite of haemorrhagic and thromboembolic complications, (iii) timing of TA, and (iv) mortality and functional outcome at discharge and Day 90. We defined thromboembolic complications as intracranial, i.e. ischaemic stroke (scored upon serial follow-up imaging), or extracranial thromboembolic complications,²³ i.e. systemic embolism, myocardial infarction [ST-elevated myocardial infarction (STEMI) and non-STEMI with troponin elevation >99 th percentile upper reference limit],²⁴ valve thrombosis (evaluated through routine echocardiography or computed tomography), or symptomatic pulmonary embolism.²⁵ Coincidence of intra- and extracranial thromboembolic complications were scored as intracranial, e.g. valve thrombosis with ischaemic stroke. We evaluated timing of TA for both haemorrhagic and thromboembolic complications to establish associations with primary and secondary outcomes according to the starting point of therapy after occurrence of ICH. We analysed mortality and functional outcome at discharge and 90 days after ICH using the modified Rankin scale (mRS, higher scores indicating poorer outcome)—categorized into favourable (mRS = 0–3) and unfavourable (mRS = 4–6).²⁶

Statistical analyses

We performed statistical analyses using the SPSS 21.0 software package (www.spss.com) and R 2.12.0 (www.r-project.org). We conducted complete case analysis as the maximum rate of missing values was less than 3% among all analysed parameters included into outcome analyses. Statistical tests were two-sided and the significance level was set at $\alpha = 0.05$. Data distribution was evaluated using the Kolmogorov–Smirnov test. Normally distributed data are presented as mean (\pm standard deviation), compared using the Student's *t*-test or univariate analysis of variance (ANOVA), and non-normally distributed data as median (interquartile range), analysed using the Mann–Whitney *U*-test or the Kruskal–Wallis *H*-test. Frequency distribution of categorized variables was compared using the Pearson's χ^2 test or the Fisher's exact test, respectively the Freeman–Halton extension of the Fisher exact test for trichotomous group comparisons. All univariate analyses and *post hoc* tests were corrected for multiple comparisons using the Holm's sequential Bonferroni procedure to minimize accumulation of type 1 errors. Sensitivity analyses were performed to investigate bias and confounding of reversal- with anticoagulation-management as well as for the doses of prothrombin complex concentrates (PCCs) with thromboembolic complications by receiver operating characteristics (ROC) analyses.

To account for potential confounding by indication, we additionally performed propensity score matching using parallel, balanced, variable ratio (1: many) nearest-neighbour approach at a calliper of 0.1.²⁷ The propensity score was calculated using parameters showing differences for inter-group comparisons, i.e. age, GCS, and haematoma volume.

We calculated crude incidence rates (CIRs) per 100 patient days on each specific treatment for haemorrhagic complications, thromboembolic complications, and the composite of both. We compared incidence rates according to treatment exposure (with and without TA) presented as conditional maximum likelihood (CML) estimate of rate ratios 95% confidence interval (CI) and compared CIR using the Mid-P exact test. Analyses were censored after occurrence of aforementioned complications or patient death. Comparisons of CIR according to treatment exposure were conducted for (i) the overall cohort, (ii) the propensity score matched cohort, (iii) patients dichotomized according to valve position (aortic vs. mitral or both, preceded by CIR analyses based on valve position omitting treatment exposure), and (iv) MVH-patients with present atrial fibrillation vs. sinus rhythm.

Timing of TA was analysed in relation to outcome complications using stepwise-forward multivariable adjusted Cox regression modelling. We calculated hazard ratio (HR) estimates for each day after ICH derived from patient clusters (HR-estimate at the median of a 3 day interval, i.e. HR-estimate at Day 4 calculated using the interval from Day 3 to 5) comparing patients that started TA vs. no-TA. HR estimates were weighted and smoothed by the method of moving averages to correct for overestimation. Analyses were adjusted for haemorrhagic and thromboembolic risk (CHADS₂ and HAS-BLED Scores) as well as for statistical imbalances among baseline clinical characteristics (GCS, ICH volume). The primary outcome—associations of TA with safety—was calculated using haemorrhagic complications as the dependent variable. The secondary outcome constituted both complications as dependent variable. The significance thresholds (intercept of the 5% CI with the HR of 1) allowed identification of a time interval at which patients were at significantly increased risk to experience the dependent outcome in relation to treatment exposure. Dichotomous functional outcome and mortality analyses at hospital discharge are presented for all patients receiving TA separately shown for the identified time-intervals and for the overall cohort comparing patients with TA vs. no-TA.

Results

Study analyses

Of 2504 OAC-ICH patients (see [Supplementary material online, Table S1](#)) recruited among 22 tertiary care centres of the German nationwide RETRACE I and II study programs, a total of 166 patients with MHVs were identified ([Figure 1](#)). At first, reversal management was investigated in 148 patients after exclusion of 18 patients that received early care limitations (<24h) without follow-up imaging. Secondly, analyses of anticoagulation management were conducted in all patients who survived the first 72 h leading to exclusion of another 11 patients (see [Supplementary material online, Table S2](#) for details on excluded patients). The remaining 137 patients were grouped according to treatment exposure, i.e. 71 patients received no-TA (16 patients received no antithrombotic treatment and 55 patients' heparins for VTE-prophylaxis) and 66 patients received TA (13 patients with VKA and 53 patients with unfractionated heparin or LMWH). All following analyses of anticoagulation management were calculated dichotomously for TA vs. no-TA as *post hoc* analyses (trichotomous inter-group comparison) of all possible modes of anticoagulation management and detailed comparison of patients anticoagulated with VKA and heparin suggested limited confounding (see [Supplementary material online, Tables S3 A and B and S4](#)).

Analyses of reversal management

Sufficient INR-reversal ([Table 1](#)) was achieved in 37/148 (25.0%) of patients and was associated with a significantly decreased rate of haematoma enlargement [6/30 (20.0%) vs. 49/100 (49.0%); $P < 0.01$]. Reversal was mainly carried out using PCC 136/148 (91.9%). Characteristics of patients sufficiently reversed revealed a poorer admission status [GCS: 9 (3–14) vs. 14 (10–15); $P < 0.01$], more frequent intraventricular haemorrhage [23/37 (62.2%) vs. 40/111 (36.0%); $P < 0.01$], and increased initial ICH volumes [28.1 mL (14.8–63.0) vs. 19.4 mL (7.8–43.0); $P = 0.05$]. Overall, sensitivity analyses provided neither signals that INR-reversal was associated with acute (<72 h) or delayed (≥ 72 h) occurrence of thromboembolic complications, nor that the total cumulative dose of PCC given correlated with an increased thromboembolic risk [area under the curve (AUC): 0.67, 95% (0.49–0.87); $P = 0.09$]. These data suggested that clinically less severely affected patients received less aggressive reversal management and thus carry an increased risk to experience haematoma enlargement ([Table 1](#)). Of note, the proportion of patients who were restarted on TA was not statistically different among patients with vs. without sufficient reversal [16/37 (43.2%) vs. 53/111 (47.7%); $P = 0.63$, [Table 1](#)].

Analyses of anticoagulation management

Baseline characteristics ([Table 2](#)) of eligible patients ($n = 137$) showed that patients who received TA were less severely affected by ICH [i.e. smaller ICH volumes: 14.7 mL (6.0–38.1) vs. 23.9 mL (10.7–65.4) $P = 0.02$; more favourable neurological status: GCS 14 (13–15) vs. 12 (5–15), $P < 0.01$; and decreased ICH severity: ICH-Score 1 (0–2) vs. 2 (1–3), $P < 0.01$]. The median length of hospital stay between treatment groups was comparable [TA: 15 (9–25) days vs. no-TA: 13 (6–20) days; $P = 0.07$] and serial INR levels after acute reversal management did not differ between TA and no-TA patients neither before nor at the beginning of outcome assessment ([Table 2](#)).

Analyses of primary and secondary outcomes

We recorded a total of 21/137 (15.3%) haemorrhagic complications, at a significantly increased rate in patients restarted on TA (17/66, 25.8%) compared to patients without TA (4/71, 5.6%; $P = 0.001$; [Figure 2](#), [Table 3](#)). We recorded a total of 8/137 (5.8%) thromboembolic complications, revealing a trend towards reduced rates in TA patients [1/66 (1.5%) vs. 7/71 (9.9%) no-TA; $P = 0.06$].

[Figure 2](#) provides a detailed overview of all complication characteristics in relation to mode of treatment, valve position and mortality. Of all 29 complications the majorities were intracranial (haemorrhagic complications: 16 intracranial, 5 extracranial; thromboembolic complications: 6 intracranial, 2 extracranial). There were no significant differences in baseline characteristics (see [Supplementary material online, Table S4](#)) and no significant difference in the rate of haemorrhagic complications during hospital stay among patients who resumed TA using VKA vs. heparins [VKA: 3/13 (23.1%) vs. heparin: 14/53 (26.4%); $P = 0.81$].

Comprehensive analyses of the primary outcome (correcting for treatment crossover; i.e. switching from prophylactic to therapeutic dosing or vice versa) were conducted according to time spent on each specific treatment and are presented as CIR per 100 patient days ([Table 3](#)). In patients with TA, the CIR for haemorrhagic

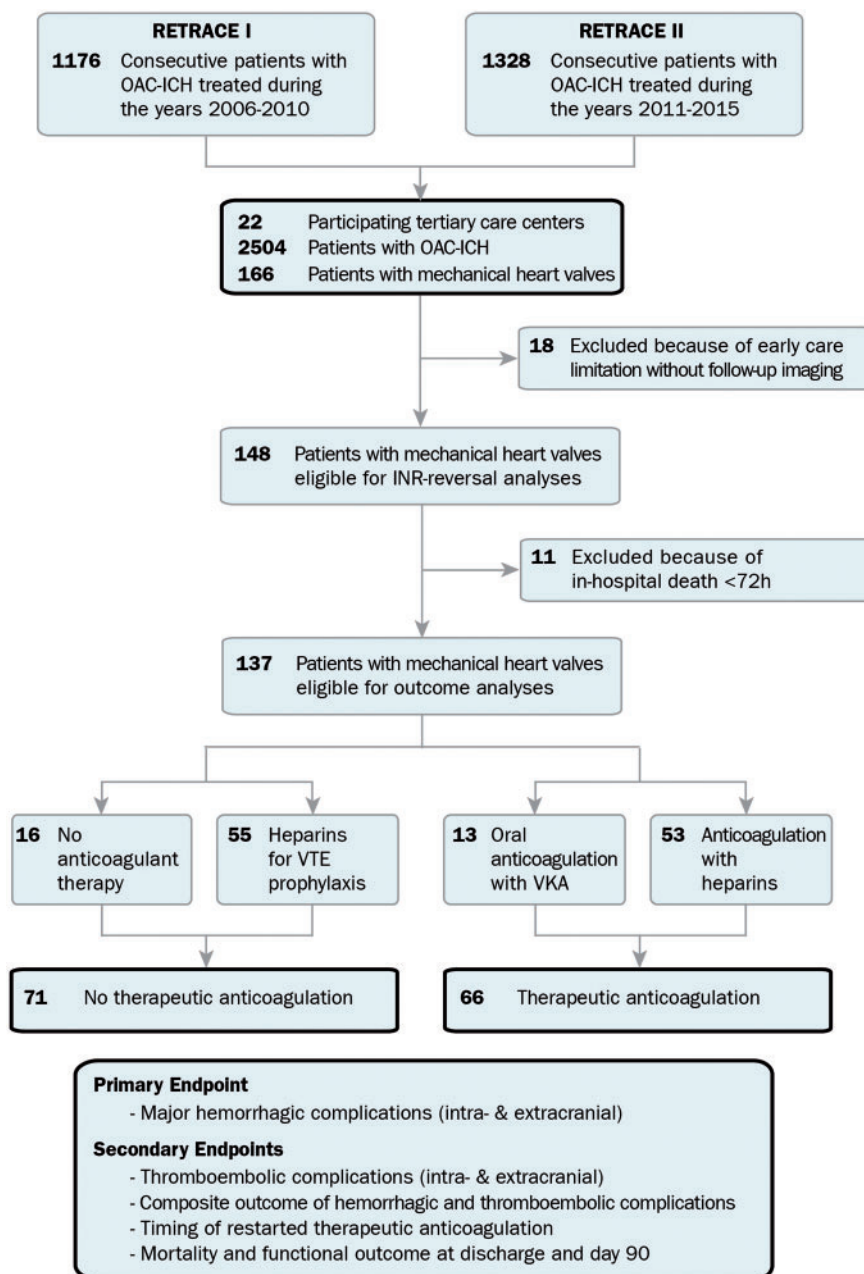


Figure 1 Study profile and numbers of participants. Individual level data of 2504 patients with anticoagulation-associated intracerebral haemorrhage were pooled and screened for the study. We identified 166 patients with mechanical heart valves *in situ*. For analysis of anticoagulation reversal, we excluded 18 patients because of early treatment restriction without follow-up imaging. For analysis of anticoagulation resumption, because of the predefined quarantine period of 72 h, we excluded additional 11 patients with early (<72 h) in-hospital death. For outcome analyses, 137 mechanical heart valve patients were eligible and were dichotomized into patients restarted on therapeutic anticoagulation vs. those without therapeutic anticoagulation. Therapeutic anticoagulation consisted either of restarting vitamin-K antagonists ($n = 13$) or systemic heparinization ($n = 53$). We defined major haemorrhagic complications as primary safety outcome measure consisting of (i) any intracranial haemorrhage, i.e. new intracerebral haemorrhage distant from the initial haematoma, any delayed haematoma enlargement >33% occurring beyond the 72 h quarantine period, and new sub-arachnoid or sub-/epidural haemorrhage, as well as (ii) any major extracranial hemorrhage [i.e. acute decrease (<24 h) in haemoglobin ≥ 3 g/dL, transfusion ≥ 2 units packed red blood cells, bleeding in critical site: intraspinal, intraocular, pericardial, articular, retroperitoneal, or fatal bleeding]. We defined thromboembolic complications as intracranial, i.e. ischaemic stroke (unrelated to intracranial interventions scored upon serial follow-up imaging), or extracranial thromboembolic complications, i.e. systemic embolism, myocardial infarction (ST-elevated myocardial infarction and non-ST-elevated myocardial infarction with troponin elevation >99th percentile upper reference limit), valve thrombosis (evaluated through routine echocardiography or computed tomography), or symptomatic pulmonary embolism. Coincidence of intra- and extracranial thromboembolic complications were scored as intracranial, e.g. valve thrombosis with ischemic stroke. ICH, intracerebral haemorrhage; OAC, oral anticoagulation; VTE, venous thromboembolism.

Table 1 Clinical characteristics of patients with oral anticoagulation-ICH and mechanical heart valve who received sufficient oral anticoagulation reversal or insufficient oral anticoagulation reversal (n = 148)

	Sufficient INR reversal (n = 37)	Insufficient INR reversal (n = 111)	P-value
Age (years), mean (\pm SD)	69 (59–75)	70 (62–76)	0.44
Female sex, n (%)	11 (29.7)	42 (37.8)	0.37
Pre-mRS, mean (\pm SD) ^a	0 (0–1)	0 (0–2)	0.38
Symptom onset–onset admission, (min), median (IQR)	125 (70–202)	129 (60–348)	0.73
Glasgow coma scale, median (IQR) ^b	9 (3–14)	14 (10–15)	<0.01
Mechanical heart valve positions, n (%)			
Aortic valve	27 (73.0)	69 (62.2)	0.23
Mitral valve	10 (27.0)	32 (28.8)	0.84
Both locations	0 (0.0)	10 (9.0)	0.12
Imaging			
Deep ICH, n (%)	15 (40.5)	45 (40.5)	1.00
Lobar ICH, n (%)	18 (48.6)	51 (45.9)	0.78
Other ICH locations, n (%)	4 (5.4)	15 (9.0)	0.78
ICH volume (mL), median (IQR)	28.1 (14.8–63.0)	19.4 (7.8–43.0)	0.05 ^c
Intraventricular haemorrhage, n (%)	23 (62.2)	40 (36.0)	<0.01
Reversal treatment			
Admission reversal (min), median (IQR)	80 (54–120)	101 (60–235)	0.15
Any reversal treatment, n (%)	37 (100.0)	109 (98.2)	1.00
PCC, n (%)	37 (100.0)	99 (89.2)	0.07
Dose (IU), median (IQR)	2500 (1800–3200)	2000 (1500–3000)	0.15
FFP, n (%)	7 (18.9)	16 (14.4)	0.51
Konakion, n (%)	31 (83.8)	84 (75.7)	0.31
Blood pressure control (mmHg), median (IQR)			
Initial systolic BP	162 (133–187)	156 (140–186)	0.85
Initial diastolic BP	89 (72–98)	80 (70–99)	0.89
Initial mean arterial BP	108 (89–127)	107 (96–127)	0.77
Systolic BP (4 h)	141 (120–159)	141 (122–152)	0.99
Diastolic BP (4 h)	65 (60–74)	70 (60–80)	0.31
Mean arterial BP (4 h)	93 (79–101)	91 (83–103)	0.65
Systolic BP (8 h)	133 (125–141)	132 (117–142)	0.41
Diastolic BP (8 h)	68 (60–73)	65 (58–74)	0.63
Mean arterial BP (8 h)	89 (83–98)	87 (80–96)	0.36
Systolic BP (12 h)	127 (110–149)	135 (123–145)	0.22
Diastolic BP (12 h)	60 (56–73)	66 (57–75)	0.43
Mean arterial BP (12 h)	83 (75–100)	89 (80–96)	0.33
Coagulation parameters			
INR on admission, median (IQR)	2.83 (2.46–3.67)	2.70 (2.40–3.44)	0.27
1st INR after reversal, median (IQR)	1.17 (1.11–1.22)	1.39 (1.27–1.60)	<0.01
INR <1.3 on 1st INR after reversal, n (%)	37 (100.0)	34 (30.6)	<0.01
INR <1.3 within 4 h, n (%)	37 (100.0)	0 (0.0)	<0.01
INR after 24 h, median (IQR)	1.26 (1.20–1.37)	1.27 (1.20–1.39)	0.64
INR after 48 h, median (IQR)	1.24 (1.13–1.34)	1.26 (1.16–1.41)	0.41
INR after 72 h, median (IQR)	1.23 (1.11–1.37)	1.25 (1.14–1.46)	0.33
Complications \leq 72 h after ICH, n (%)			
Haemorrhagic complications			
Hematoma enlargement	6/30 (20)	49/100 (49)	<0.01
Other intracranial haemorrhage	1 (2.7)	0 (0.0)	0.25
Extracranial haemorrhage	0 (0.0)	0 (0.0)	1.00
Thromboembolic complication	0 (0.0)	0 (0.0)	1.00

Continued

Table 1 Continued

	Sufficient INR reversal (n = 37)	Insufficient INR reversal (n = 111)	P-value
Complications ≥ 72 h after ICH, n (%)			
Haemorrhagic complications	5 (13.5)	16 (14.4)	0.89
Thromboembolic complication	2 (5.4)	6 (5.4)	1.00
Anticoagulation management			
Therapeutic Anticoagulation, n (%)	16 (43.2)	53 (47.7)	0.63
Day after ICH, median (IQR)	7 (1–17)	4 (1–11)	0.89
<72 h after ICH, n (%)	7 (18.9)	20 (18.0)	0.88

Significant parameters are presented in bold.

Sufficient OAC reversal was defined as achieving INR values < 1.3 within 4 h after admission.

ICH, intracerebral haemorrhage; INR, international normalized ratio; IQR, interquartile range; IU, international unit; mRS, modified Rankin Scale; SD, standard deviation.

^aModified Rankin Scale range 0–6, from no disability to death.

^bGlasgow coma scale range 3–15, from deep coma to alert.

^cNot significant after Holm's sequential Bonferroni correction.

complications was significantly increased (TA: CIR 3.53, 95% CI 2.05–5.65 vs. no-TA: CIR 0.34, 95% CI 0.09–0.88) resulting in a significantly increased CML incidence rate ratio (10.31, 95% CI 3.68–35.70; $P < 0.01$). Sub-analyses of potential baseline confounders in patients resumed on TA experiencing intracranial haemorrhagic complications did not provide significant differences (see [Supplementary material online, Table S5](#)). Comparing the CIRs between VKA (CIR 5.36, 95% CI 1.08–15.6) and heparin-treated patients (CIR 3.29, 95% CI 1.79–5.51) did not provide significant associations with increased haemorrhagic complications with one or the other treatment (CML incidence rate ratio 1.63, 95% CI 0.38–5.26; $P = 0.12$).

The CIR per 100 patient days for the occurrence of thromboembolic complications ([Table 3](#)) were not significantly different between both (TA vs. no-TA) treatment groups (CML incidence rate ratio 0.35, 95% CI 0.02–2.24; $P = 0.34$). For the composite outcome of haemorrhagic and thromboembolic complications, the CIR per 100 patient days showed a significantly increased rate in patients receiving TA (TA: CIR 3.73, 95% CI 2.21–5.90 vs. no-TA: CIR 0.94, 95% CI 0.47–1.68; CML incidence rate ratio 3.97, 95% CI 1.88–8.69; $P < 0.01$).

To establish that these findings were not confounded by differences in baseline characteristics ([Table 2](#)), we performed a propensity score matching to balance inter-group differences (see [Supplementary material online, Table S6](#)). Analyses of primary and secondary outcomes in the propensity score matched cohort verified that the CIR per 100 patient days for haemorrhagic complications (CML incidence rate ratio 8.02, 95% CI 2.73–28.54; $P < 0.01$), and for the composite of haemorrhagic and thromboembolic complications (CML incidence rate ratio 3.14, 95% CI 1.41–7.12; $P < 0.01$), were significantly increased in disadvantage of patients receiving TA (see [Supplementary material online, Table S7](#)).

Timing of therapeutic anticoagulation after intracerebral haemorrhage

Patients with TA that experienced a haemorrhagic complication restarted TA significantly earlier than patients without a haemorrhagic complication [median of 3 (2–10) days after ICH vs. median of 8 (5–19) days after ICH; $P < 0.01$]. Timing of TA was not significantly different ($P = 0.10$) among patients restarting VKA [7 (4–30) days] vs.

heparin [3 (2–10) days]. In all patients who received continuous intravenous unfractionated heparin, aPTT levels were within the targeted therapeutic range within 72 h after heparin initiation (see [Supplementary material online, Figure S1](#)).

We calculated adjusted Cox regression analyses to explore the associations of re-initiating TA—detailed assessment of timing for each day after ICH during the period of hospital stay—with haemorrhagic and thromboembolic complications ([Figure 3](#)). Regarding the primary outcome, re-initiation of TA was associated with a significantly increased hazard ratio for haemorrhagic complications until 13 days after ICH (HR 7.06, 95% CI 2.33–21.37; $P < 0.01$), whereas TA initiated ≥ 14 days after ICH until hospital discharge was no longer significantly related to haemorrhagic complications (HR 1.50, 95% CI 0.17–13.32; $P = 0.71$) ([Figure 3A](#)). We investigated the clinical relevance of this association by comparing patients with TA initiated ≥ 14 days after ICH to patients with earlier TA ([Figure 3D](#)). This analysis demonstrated a statistical trend towards a reduced discharge mortality rate in patients who received TA ≥ 14 days [mortality: 0/16 (0%) vs. 12/53 (22.6%); $P = 0.055$], yet without influence on functional outcome at discharge [mRS = 0–3: 2/16 (12.5%) vs. 14/53 (26.4%); $P = 0.33$].

Balancing haemorrhagic and thromboembolic complications according to timing of re-initiated TA, there was a significant association with an increased hazard ratio for the composite outcome until 5 days after incident ICH (HR 2.51, 95% CI 1.10–5.70; $P = 0.03$), whereas TA started ≥ 6 days after ICH until hospital discharge was no longer significantly related to the composite of haemorrhagic and thromboembolic complications (HR 1.15, 95% CI 0.39–3.38; $P = 0.80$; [Figure 3B](#)). To investigate the clinical significance of this association we compared patients started on TA ≥ 6 days after ICH to patients with earlier TA ([Figure 3C](#)). This analysis demonstrated a trend towards a reduced discharge mortality [mortality: 2/30 (6.7%) vs. 10/39 (25.6%); $P = 0.055$]. No difference was observed regarding functional outcome [mRS = 0–3: 7/30 (23.3%) vs. 9/39 (23.0%); $P = 1$].

Influence of therapeutic anticoagulation on mortality and functional outcome

Functional outcome and mortality at discharge and 3 months is provided in [Supplementary material online, Figure S2](#). There was

Table 2 Baseline characteristics of patients with oral anticoagulation-ICH and mechanical heart valve

	No therapeutic anticoagulation (n = 71)	Therapeutic anticoagulation (n = 66)	P-value
Age (years), mean (\pm SD)	71 (62–77)	69 (60–73)	0.14
Female sex, n (%)	26 (36.6)	21 (31.8)	0.55
Pre-mRS, mean (\pm SD) ^a	0 (0–1)	0 (0–1)	0.67
Glasgow coma scale, median (IQR) ^d	12 (5–15)	14 (13–15)	<0.01
ICH score, median (IQR) ^e	2 (1–3)	1 (0–2)	<0.01
Prior medical history, n (%)			
Hypertension	57 (80.3)	56 (84.8)	0.48
Diabetes mellitus	22 (31.0)	17 (25.8)	0.50
Ischaemic stroke	14 (19.7)	12 (18.2)	0.82
Congestive heart failure	14 (19.7)	14 (21.2)	0.83
Abnormal kidney function	20 (28.2)	26 (39.4)	0.16
Abnormal liver function	4 (5.6)	5 (7.6)	0.74
Additional antiplatelet medication	9 (12.7)	7 (10.6)	0.71
Mechanical heart valve positions, n (%)			
Aortic valve	51 (71.8)	39 (59.1)	0.12
Mitral valve	15 (21.1)	22 (33.3)	0.11
Both locations	5 (7.0)	5 (7.6)	1.00
OAC scores			
CHADS ₂ ^b			
Mean (\pm SD)	2.0 (\pm 1.4)	2.1 (\pm 1.2)	
Median (IQR)	2 (1–3)	2 (1–3)	0.99
High-risk (\geq 2), n (%)	44 (62.0)	39 (59.1)	0.73
HAS-BLED ^c			
Mean (\pm SD)	2.5 (\pm 1.3)	2.6 (\pm 1.1)	
Median (IQR)	2 (1–4)	3 (2–3)	0.32
High-risk (\geq 3), n (%)	29 (40.8)	37 (56.1)	0.08
Imaging			
Deep ICH, n (%)	28 (39.4)	29 (43.9)	0.59
Lobar ICH, n (%)	34 (47.9)	27 (40.9)	0.41
Cerebellar ICH, n (%)	6 (8.5)	6 (9.1)	0.90
Brainstem ICH, n (%)	1 (1.4)	2 (3.0)	0.61
Primary IVH, n (%)	2 (2.8)	2 (3.0)	1.00
ICH volume (mL), median (IQR)	23.9 (10.7–65.4)	14.7 (6.0–38.1)	0.02 ^f
Intraventricular haemorrhage, n (%)	32 (45.1)	26 (39.4)	0.50
Coagulation parameters, median (IQR)			
INR on admission	2.68 (2.15–3.39)	2.76 (2.43–3.51)	0.29
1st INR after reversal	1.28 (1.16–1.47)	1.33 (1.17–1.56)	0.34
INR after 24 h	1.27 (1.18–1.39)	1.30 (1.21–1.38)	0.31
INR after 48 h	1.23 (1.14–1.38)	1.27 (1.17–1.38)	0.31
INR after 72 h	1.24 (1.12–1.46)	1.25 (1.18–1.40)	0.72

Significant parameters are presented in bold.

ICH, intracerebral haemorrhage; INR, international normalized ratio; IQR, interquartile range; mRS, modified Rankin Scale; SD, standard deviation.

^aModified Rankin Scale range 0–6, from no disability to death.

^bCHADS₂ score range 0–6, from low to high risk of thromboembolism.

^cHAS-BLED score range 0–9, from low to high risk of bleeding under oral anticoagulation.

^dGlasgow coma scale range 3–15, from deep coma to alert.

^eICH score range 0–6, from low to high risk of short-term mortality. Significant P-values are presented in bold.

^fNot significant after Holm's sequential Bonferroni correction.

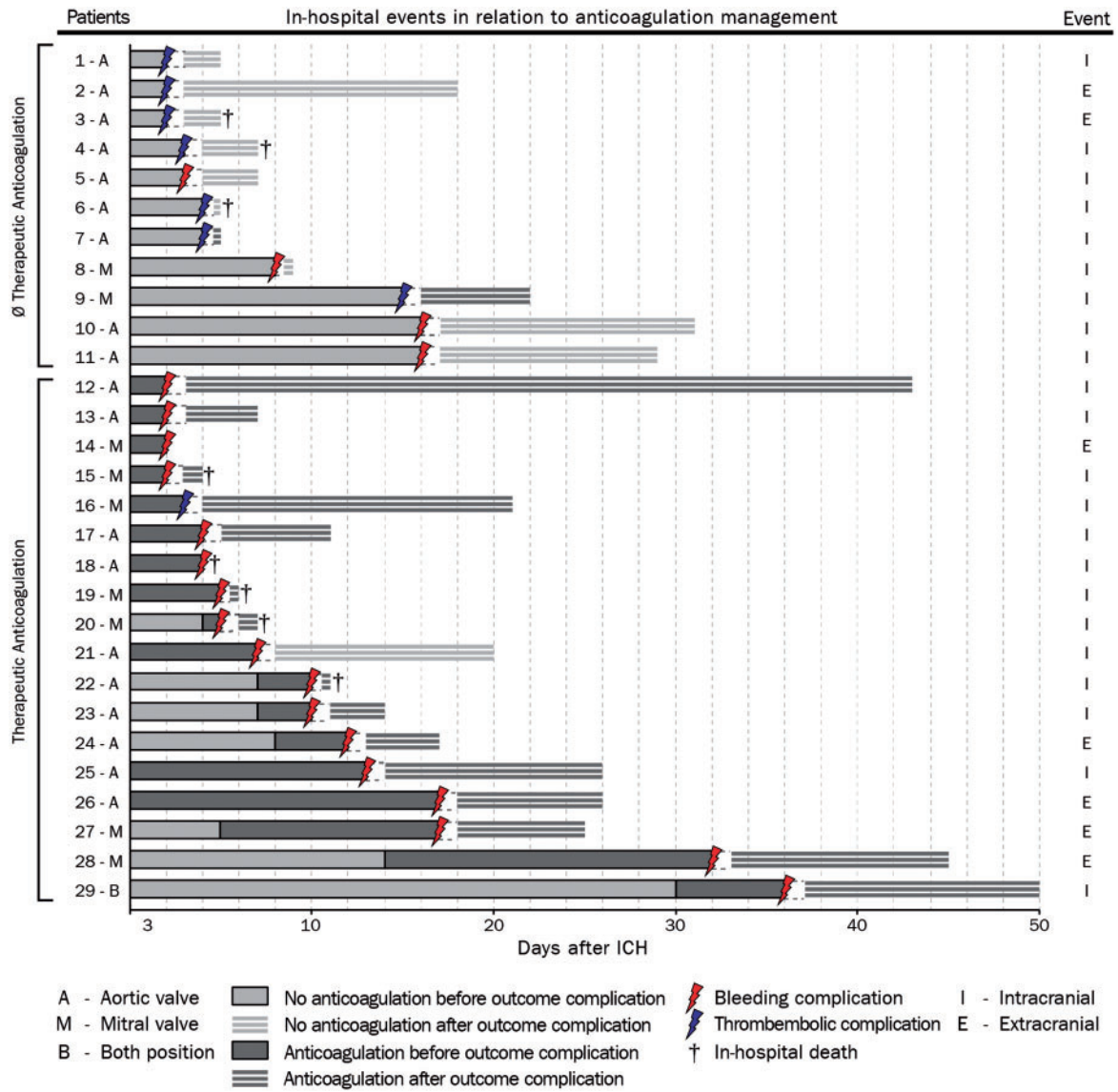


Figure 2 Details on haemorrhagic and thromboembolic complications during hospital stay. Haemorrhagic or thromboembolic complications occurred in 29 patients with mechanical heart valves, dichotomized according to treatment exposure (therapeutic anticoagulation shown dark grey bars, no therapeutic anticoagulation shown as light grey bars). Complications were adjudicated according to anticoagulation treatment present immediately prior to clinical occurrence or diagnosis of haemorrhagic and thromboembolic complications. The mechanical valve position is indicated by 'A', 'M', 'B', either 'aortic', 'mitral', or 'both'. The time-point of occurrence and the type of complication is depicted by coloured arrows (haemorrhagic shown as red, thromboembolic as blue). The classification of complications as intra- or extracranial is shown at the right hand side, 'I', intracranial and 'E', extracranial. The cross indicates the time-point of in-hospital mortality. The length of hospital stay after the censoring complication is depicted by light grey bars with white horizontal stripes. For definitions of haemorrhagic and thromboembolic complications please see methods. ICH, intracerebral haemorrhage.

no significant difference, neither in mortality nor in the proportion of patients achieving a favourable functional outcome, among patients who received vs. who did not receive TA at the time of hospital discharge and 90 days after ICH (mortality at discharge: $P = 0.25$, at 3 months: $P = 1$; favourable functional outcome at discharge: $P = 0.92$, at 3 months: $P = 0.81$, [Supplementary material online, Figure S2](#)).

Sub-analyses according to valve position

The comparison of patients with aortic valve vs. patients with mitral valve prostheses, or with both aortic and mitral valve prostheses, revealed no significant differences in the proportion of patients with haemorrhagic complications [aortic valve: 13/90 (14.4%) vs. mitral valve or both: 8/47 (17.0%); $P = 0.69$], thromboembolic complications [aortic valve: 6/90 (6.7%) vs. mitral valve or both: 2/47 (4.2%);

Table 3 Analysis of primary and secondary outcomes according to treatment exposure

	No. of patients	No. of outcomes	P-value ^a	No. of patient days	Incidence rate per 100 patient days (95% CI)	CML estimate of rate ratio (95% CI)	P-value ^b
Haemorrhagic complication							
TA	66	17	<0.01	482	3.53 (2.05–5.65)	10.31 (3.67–35.70)	<0.01
No TA	71	4		1169	0.34 (0.09–0.88)		
Thromboembolic complication							
TA	66	1	0.06	482	0.21 (0.01–1.15)	0.35 (0.02–2.24)	0.34
No TA	71	7		1169	0.60 (0.24–1.23)		
Composite endpoint							
TA	66	18	0.09	482	3.73 (2.21–5.90)	3.97 (1.88–8.69)	<0.01
No TA	71	11		1169	0.94 (0.47–1.68)		

Significant P-values are presented in bold. For definitions of haemorrhagic and thromboembolic complications please see Methods.

CI, confidence interval; CML, conditional maximum likelihood; No, number; No TA, i.e. either no antithrombotic medication received during hospital stay or administration of heparins [unfractionated heparin, low molecular weight heparins (LMWH)] in prophylactic dosing for prevention of venous thromboembolism (VTE); TA, i.e. either restarted therapeutic anticoagulation using VKA (scored on first day with INR levels ≥ 1.5), continuous or subcutaneous heparinization (targeting a therapeutic range of aPTT extended by 1.5–2.5) and/or full weight adjusted dosing of LMWH (targeting 0.5–0 anti-Xa units/mL).

^aCompared using the Pearson's χ^2 or the Fisher's exact test as appropriate.

^bCompared using the Mid-P exact test.

$P=0.71$], or the composite endpoint (see [Supplementary material online, Table S8](#)). Analyses of patients with different valve position according to treatment exposure (see [Supplementary material online, Table S9](#)) did also not provide significant differences; i.e. thromboembolic complications without TA compared between valve positions [aortic valve: 6/51 (11.7%) vs. mitral valve or both: 1/20 (5.0%); $P=0.66$; CML incidence rate ratio 2.65, 95% CI 0.39–61.34; $P=0.39$].

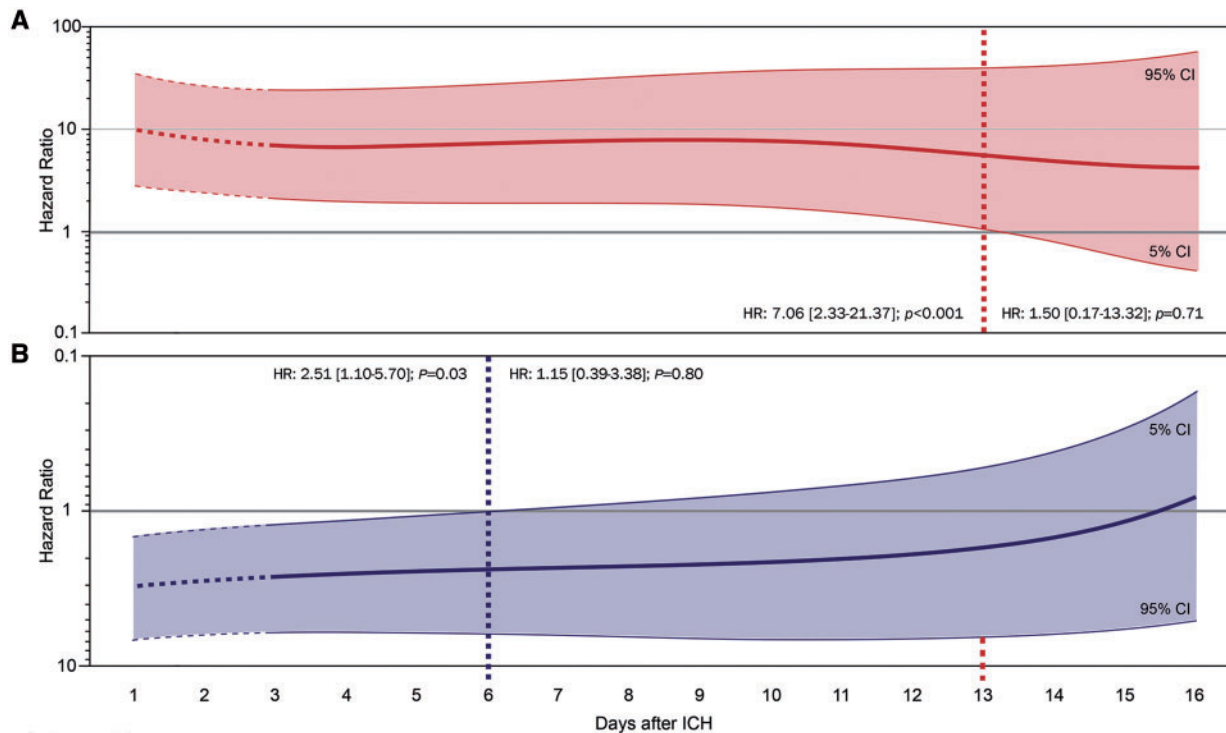
Sub-analyses of mechanical heart valve patients with atrial fibrillation vs. sinus rhythm

Analyses of MHV-patients in sinus rhythm vs. atrial fibrillation (see [Supplementary material online, Table S10](#)) showed that MHV patients with concomitant atrial fibrillation were at increased risk for both haemorrhagic (CML incidence rate ratio 0.38, 95% CI 0.16–0.96; $P=0.04$) and thromboembolic complications (CML incidence rate ratio 0.29, 95% CI 0.07–1.29; $P=0.09$). Thus, the composite outcome was significantly increased in MHV-patients with atrial fibrillation [sinus rhythm: 16/99 (16.1%) vs. atrial fibrillation: 13/38 (34.2%); $P=0.02$]. Evaluating the associations of heart rhythm and treatment exposure (see [Supplementary material online, Table S11](#)); comparing patients with sinus rhythm vs. atrial fibrillation restarted on TA showed no difference regarding haemorrhagic complications (CML incidence rate ratio 0.54, 95% CI 0.20–1.58; $P=0.24$). Patients with concomitant atrial fibrillation not restarted on TA during hospital stay showed an increased incidence for thromboembolic complications (1.53, 95% CI 0.41–3.91 vs. 0.33, 95% CI 0.07–0.97) resulting in an CML incidence rate ratio (0.22, 95% CI 0.04–1.05; $P=0.06$). Therefore, the composite outcome in MHV-patients with atrial fibrillation not restarted on TA was significantly increased [sinus rhythm: 4/50 (8.0%) vs. atrial fibrillation: 7/21 (33.3%); $P=0.01$].

Discussion

To our knowledge this study represents the largest analysis of patients with acute parenchymal ICH related to the intake of vitamin-K-antagonists in the presence of MHV. Regarding reversal management, our results showed that sufficient INR-reversal with PCC was associated with decreased haematoma enlargement without increasing thromboembolic events. Analyses of anticoagulation strategies demonstrated that early re-initiation of TA was associated with increased rates of haemorrhagic complications until 13 days after initial ICH and with respect to safety should not be routinely restarted before 14 days. Thromboembolic complications occurred notably in patients without TA, however at a significantly lower incidence rate than haemorrhagic complications under TA. Therefore, concerning the composite of haemorrhagic and thromboembolic complications, our findings suggest that TA should not be reinitiated earlier than 6 days after initial ICH and may be considered thereafter only in high-risk patients to optimally balance between least haemorrhagic and thromboembolic complications (see [take home figure](#)). Several aspects need discussion.

First, regarding reversal management, in contrast to primary ICH haematoma enlargement is known to occur more frequently and protracted in OAC-ICH.^{28,29} This may be explained by the altered coagulation not completely or not sustainably normalized after initial reversal treatment.^{28,29} As recently demonstrated, elevated INR levels need to be rapidly and fully reversed using PCC to stabilize the haematoma.^{5,6} The present analysis verified that patients not completely reversed were at higher risks to experience haematoma enlargement. This aspect is of specific relevance as clinically less severely affected patients underwent less aggressive reversal management which—contrary to the intended effect—resulted in poorer outcome. In addition, we here demonstrated that completely reversed patients were not at risk for



Patients at risk

TA, No.	31	29	29	27	24	26	26	24	22	19	19	16	14	13
No TA, No.	71	63	59	52	50	48	46	42	40	37	34	31	27	24

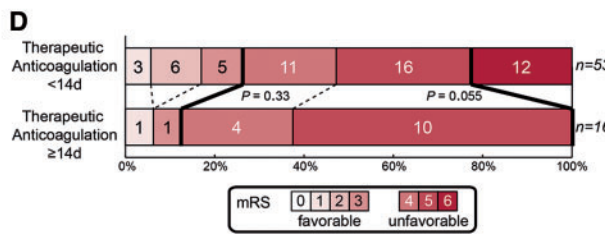
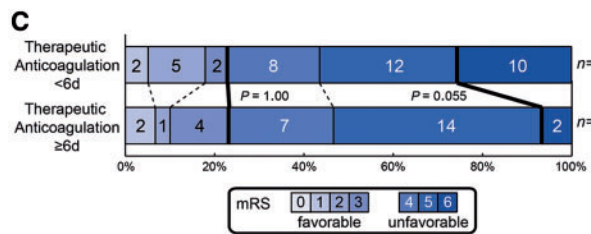
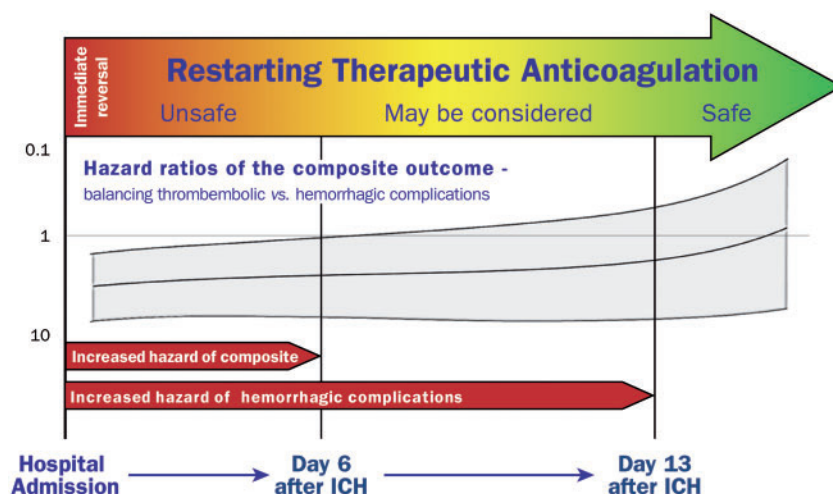


Figure 3 Timing of therapeutic anticoagulation and clinical outcome. Adjusted cox proportional hazard models were used to visualize the association between the day of restarting therapeutic anticoagulation after intracerebral haemorrhage and (A) haemorrhagic complications and (B) the composite of haemorrhagic and thromboembolic complications during hospital stay. Patients were dichotomized according to treatment exposure (therapeutic anticoagulation vs. no therapeutic anticoagulation) and sequentially included into analyses at the day therapeutic anticoagulation was restarted. Specifically, we calculated hazard ratio estimates (y-axis) for both outcomes at each day after intracerebral haemorrhage using time-patient-clusters (3 day intervals) of patients that restarted therapeutic anticoagulation at a median of the presented day on the x-axis, and compared these with patients without therapeutic anticoagulation with available datapoints within these time-patient-clusters. Hazard ratio estimates were weighted and smoothed by the method of moving averages to correct for overestimation. 'Patients at risk' represents the number of individuals with attributed treatment exposure (either therapeutic anticoagulation or no therapeutic anticoagulation) at that specific day post-intracerebral haemorrhage. Stepwise-forward Cox proportional hazard modelling was adjusted for haemorrhagic and thromboembolic risk (CHADS₂ and HAS-BLED scores) as well as for statistical imbalances among baseline characteristics (Glasgow Coma Scale, intracerebral haemorrhage volume). The thick lines (red for haemorrhagic complications, blue for the composite of haemorrhagic and thromboembolic complications) represent the hazard ratio estimates generated for every single day after intracerebral haemorrhage; the thin lines with shaded area indicate the 95% confidence intervals. The distribution of mortality and functional outcome (C and D) at discharge is displayed using the modified Rankin Scale. Analyses of in-hospital mortality and functional outcome at discharge in patients who received therapeutic anticoagulation (including three patients who died before 72 h but were restarted on therapeutic anticoagulation before) is displayed as dichotomized comparison at the identified time-threshold for (D) haemorrhagic complications and for the (C) composite of haemorrhagic and thromboembolic complications. Each score on the modified Rankin Scale is separated by dashed lines. Thick lines separate the proportion of patients with favourable (modified Rankin Scale 0–3) and unfavourable (modified Rankin Scale 4–6) outcome as well as patients with and without in-hospital mortality. HR, hazard ratio; ICH, intracerebral haemorrhage.



Take home figure In-hospital management of therapeutic anticoagulation in patients with ICH and MHV – from reversal until restarting therapy.

increased ischaemic complications, which argues in favour of an immediate and complete anticoagulation reversal in all OAC-ICH patients—including those with MHV.^{5,6}

Second, regarding anticoagulation resumption, what seems to be causative for the observed high incidence rates (>3.5% per day) of haemorrhagic complications in patients with early TA and OAC-ICH? In OAC-ICH the stability of the haematoma may be less definitive, which is why early anticoagulation may counterbalance the intracranial tamponade effect leading to an increased rate of delayed intracerebral bleeding complications.³⁰ In addition, meta-analyses and large trials in ischaemic stroke patients have previously established that heparin at dosages greater than 5000 IU twice daily cause an overall increase of haemorrhagic complications within the first 14 days.^{31,32} Moreover, in the updated Cochrane review which integrates data of over 20 000 ischaemic stroke patients early anticoagulation (<14 days) compared with aspirin, showed a greater risk for both extracranial and intracranial haemorrhages.³¹ These aspects highlight the negative safety profile of early anticoagulation even in ischaemic stroke patients.

The risk of thromboembolic complications in MHV-patients is feared and intuitively considered higher than what is actually known from previous investigations why treating physicians tend to restart anticoagulation early.^{7,15,33–35} The acute risk for valve thrombosis or thromboembolism even in timely anticoagulated patients amounts up to 1% per day for valve thrombosis and 0.2% per day for systemic thromboembolisms including ischaemic stroke and is greatest immediately after surgical implantation.^{36,37} In line with these data, we here noticed a thromboembolism rate of 0.2% per day in anticoagulated patients, and in patients without anticoagulation there was a rather modestly increased rate of 0.6% per day. Now, comparing incidence rates of haemorrhagic complications we documented a 10 times higher hazard with early anticoagulation. Hypothetically translated, this would result in a number needed to harm of 31 patients per day to experience a haemorrhagic complication if anticoagulated vs. a

number need to harm of 256 patients per day to experience a thromboembolic complications if not anticoagulated. Hence, these findings argue against aggressive early anticoagulation and it seems acceptable to withhold that treatment in the acute phase of ICH in order to avoid severe bleeding complications.

Current investigations regarding the optimal time-point of OAC-resumption focused on ICH patients with atrial fibrillation, and although there are various observational studies and meta-analyses showing a benefit for OAC-re-initiation on the long-term, it is still uncertain when to restart OAC.^{5,38–40} A recent large-sized registry study suggested an optimal time-point for resumption of 7–8 weeks in patients with atrial fibrillation.⁴⁰ This timeframe however appears not to meet the specific demands of MHV-patients. In this special subset of ICH patients no larger study and no treatment recommendation, neither in cardiologic nor neurological international guidelines, exists.^{8,10,11,41} A recent short report suggested an optimal time frame for anticoagulation resumption between 7 and 10 days after ICH, but needs to be interpreted with caution as this retrospective clinical database query (1996–2011) did not address ICH characteristics, reversal management (era before PCC availability in USA), and specific modes of anticoagulation strategies further lacking statistical adjustments for confounding and bias.⁴² Contrary to OAC resumption in ICH-patients with atrial fibrillation (NCT02830152, NCT02565693), it seems very unlikely that randomized trials for MHV-patients in the short or long-term future will be conducted. This multicentre nation-wide study provides the most robust basis to date facilitating routine management and further research in this field. We suggest to reinitiate TA not before Day 6 after ICH, however to restrict this treatment strategy to high-risk MHV-patients (e.g. MHV-patients with concomitant atrial fibrillation, mitral valve prosthesis, or cage-ball prosthesis, etc.). In general, given that the hazard ratio for both complications (composite outcome), similar to the significance level for haemorrhagic complications only, remained in disfavour of early

anticoagulation until Day 15, we suggest restarting anticoagulation not before 2 weeks to balance between thromboembolic and haemorrhagic complications in the gross of MHV-patients.

Several limitations need to be discussed. First, the observational and retrospective nature infers the potential for bias by indication and ICH-severity. Blinding or randomization was not feasible and may have led to a favoured assignment of TA in patients with a more favourable prognosis. Routine clinical management was executed at each individual centre, yet equally timed and standardized diagnostics (cranial or cardiac computed tomography, or cardiac sonography, etc.) were not conducted possibly underscoring evaluated outcomes. Yet, due to this apparent limitation in relation to study design, we focused specifically on safety as primary outcome and believe that false negative attribution of major haemorrhagic complications remains rather low. Although sophisticated statistical tools have been applied aimed at controlling confounding, centre effects cannot be fully excluded. Further, the number of MHV-patients and outcome events may have been too small to detect minor statistical differences in sub-analyses to fully refute type two errors.

Conclusion

In summary, restarting TA within 2 weeks after ICH in patients with MHV was associated with increased haemorrhagic complications. Optimal weighing—between least risks for thromboembolic and haemorrhagic complications—provided an earliest starting point of TA at Day 6, reserved only for patients at high thromboembolic risk.

Supplementary material

Supplementary material is available at *European Heart Journal* online.

Acknowledgements

We would like to thank Antje Milker, MD and Petra Burkhard, PhD, (University of Erlangen, Germany) for helping with logistics and data monitoring. We thank the following collaborators from sites (Departments of Neurology) across Germany for helping with data acquisition in the context of RETRACE 1: Joachim Hüwel (Dr Horst Schmidt Klinikum Wiesbaden), Christoph Terborg and Frank Trostdorf (Asklepios Klinik St. Georg, Hamburg), Tobias Neumann-Haefelin and Andras E. Racs (Hospital Fulda).

Funding

Johannes & Frieda-Marohn Foundation (FWN/Zo-Hutt/2011) and ELAN fonds (ELAN 12.01.04.1), University of Erlangen, Germany. The funders of this study had no role in study design, data collection, data analysis, data interpretation, or writing of the report. The contributing equally first authors had full access to all the data of the study and the corresponding author had final responsibility for the decision to submit for publication.

Conflict of interest: Dr Kuramatsu reports grants from Covidien (Medtronic), personal fees from Bayer, personal fees from Pfizer, personal fees from Sanofi, outside the submitted work; Dr Endres reports grants and other from Bayer, other from Boehringer Ingelheim, other from

BMS/Pfizer, other from Daiichi Sankyo, during the conduct of the study; grants from DFG, grants from BMBF, grants from EU, grants from Corona Foundation, grants from Fondation Leducq, other from Amgen, other from GSK, other from Novartis, other from Sanofi, other from Covidien, outside the submitted work; Dr Häusler reports grants and personal fees from Bayer, personal fees from Daiichi Sankyo, personal fees from BMS, personal fees from Pfizer, personal fees from Boehringer Ingelheim, personal fees from Sanofi-Aventis, personal fees from Edwards Lifesciences, non-financial support from Getemed AG, personal fees from EIP Pharma, personal fees from Medtronic, outside the submitted work; Dr Sobesky reports personal fees from Bayer, personal fees from Pfizer/BMS, personal fees from daiichi, personal fees from boehringer, outside the submitted work; Dr Ringleb reports personal fees from Boehringer Ingelheim, personal fees from Bayer, personal fees from Daiichi Sankyo, personal fees from Pfizer, outside the submitted work; Dr Purrucker reports personal fees from Boehringer Ingelheim, personal fees from Pfizer, outside the submitted work; Dr Rizos reports personal fees from BMS Pfizer, personal fees from Bayer Healthcare, personal fees from Daiichi Sankyo, personal fees from Boehringer Ingelheim, outside the submitted work; Dr Müllges reports personal fees from Boehringer Ingelheim, personal fees from Bayer Pharma, outside the submitted work; Dr Kraft reports personal fees from Bayer, personal fees from Boehringer-Ingelheim, personal fees from Daiichi-Sankyo, personal fees from Pfizer/Bristol-Myers Squibb, outside the submitted work; Dr Erbguth reports grants and personal fees from Boehringer Ingelheim, personal fees from Bayer Pharma, personal fees from Pfizer Pharma, personal fees from Bristol-Myers Squibb, personal fees from Daiichi Sankyo, outside the submitted work; Dr Nueckel reports personal fees from Speaker's fee Pfizer/BMS, personal fees from Speaker's fee Boehringer Ingelheim, outside the submitted work; Dr Schellinger reports personal fees from Boehringer Ingelheim, personal fees from Bayer, personal fees from BMS/Pfizer, personal fees from Daiichi, personal fees from Medtronic, outside the submitted work; Dr Glahn reports personal fees from Pfizer, outside the submitted work; Dr Knappe reports other from Daiichi-Sankyo, other from Bayer, outside the submitted work; Dr Fink reports personal fees from Bayer, personal fees from Boehringer, outside the submitted work; Dr Minnerup reports personal fees from Boehringer Ingelheim, personal fees from Bayer Healthcare, outside the submitted work; Dr Neugebauer reports personal fees from Boehringer Ingelheim, personal fees from Daiichi, outside the submitted work; Dr Roether reports personal fees from Bayer, personal fees from Boehringer, personal fees from Pfizer, personal fees from Bristol Myers Squibb, outside the submitted work; Dr Reimann reports personal fees from Boehringer Ingelheim, personal fees from Pfizer, personal fees from Bayer, grants from Daiichi, outside the submitted work; Dr Bäßner reports personal fees from Honoraria for lectures from Bayer Vital, Boehringer Ingelheim, Bristol-Myers Squibb, Daiichi Sankyo, outside the submitted work; Dr Schwert reports grants from Bayer Health Care, outside the submitted work; Dr Palm reports personal fees from Pfizer/BMS, personal fees from Bayer, personal fees from Boehringer Ingelheim, personal fees from Daiichi Sankyo, outside the submitted work; Dr W—hrle reports personal fees from Boehringer Ingelheim Pharma GmbH&Co.KG, personal fees from Daiichi Sankyo Pharma GmbH, outside the submitted work; Dr Günther reports personal fees from Daiichi Sankyo, personal fees from Bayer, personal fees from Boehringer Ingelheim, personal fees from Bristol-Myers Squibb/Pfizer, outside the submitted work; Dr Hamann reports participation in the Respect-ESUS trial. Dr Schwab reports personal fees from Boehringer Ingelheim, grants from Daiichi, outside the submitted work; Dr Huttner reports personal fees from Boehringer Ingelheim, grants from Medtronic, personal fees from Daiichi Sankyo, and Novartis, outside the submitted work.

References

- Baumgartner H, Falk V, Bax JJ, De Bonis M, Hamm C, Holm PJ, Jung B, Lancellotti P, Lansac E, Rodriguez Munoz D, Rosenhek R, Sjogren J, Tornos Mas P, Vahanian A, Walther T, Wendler O, Windecker S, Zamorano JL; ESC Scientific Document Group. 2017 ESC/EACTS Guidelines for the management of valvular heart disease. *Eur Heart J* 2017;**38**:2739–2791.
- Head SJ, Celik M, Kappetein AP. Mechanical versus bioprosthetic aortic valve replacement. *Eur Heart J* 2017;**38**:2183–2191.
- Jung B, Rodes-Cabau J. The optimal management of anti-thrombotic therapy after valve replacement: certainties and uncertainties. *Eur Heart J* 2014;**35**:2942–2949.
- Alfieri O, Vahanian A. The year in cardiology 2016: valvular heart disease. *Eur Heart J* 2017;**38**:628–633.
- Kuramatsu JB, Gerner ST, Schellinger PD, Glahn J, Endres M, Sobesky J, Flechsenhar J, Neugebauer H, Juttler E, Grau A, Palm F, Rother J, Michels P, Hamann GF, Huwel J, Hagemann G, Barber B, Terborg C, Trostorf F, Bazner H, Roth A, Wohrle J, Keller M, Schwarz M, Reimann G, Volkman J, Mullges W, Kraft P, Classen J, Hobohm C, Horn M, Milewski A, Reichmann H, Schneider H, Schimmel E, Fink GR, Dohmen C, Stetefeld H, Witte O, Gunther A, Neumann-Haefelin T, Racs AE, Nueckel M, Erbguth F, Kloska SP, Dorfler A, Kohrmann M, Schwab S, Huttner HB. Anticoagulant reversal, blood pressure levels, and anticoagulant resumption in patients with anticoagulation-related intracerebral hemorrhage. *JAMA* 2015;**313**:824–836.
- Steiner T, Poli S, Griebel M, Husing J, Hajda J, Freiburger A, Bendszus M, Bosel J, Christensen H, Dohmen C, Hennerici M, Kollmer J, Stetefeld H, Wartenberg KE, Weimar C, Hacke W, Veltkamp R. Fresh frozen plasma versus prothrombin complex concentrate in patients with intracranial haemorrhage related to vitamin K antagonists (INCH): a randomised trial. *Lancet Neurol* 2016;**15**:566–573.
- Sun JC, Davidson MJ, Lamy A, Eikelboom JW. Antithrombotic management of patients with prosthetic heart valves: current evidence and future trends. *Lancet* 2009;**374**:565–576.
- Joint Task Force on the Management of Valvular Heart Disease of the European Society of Cardiology (ESC); European Association for Cardio-Thoracic Surgery (EACTS), Vahanian A, Alfieri O, Andreotti F, Antunes MJ, Baron-Esquivias G, Baumgartner H, Borger MA, Carrel TP, De Bonis M, Evangelista A, Falk V, Jung B, Lancellotti P, Pierard L, Price S, Schafers HJ, Schuler G, Stepinska J, Swedberg K, Takkenberg J, Von Oppell UO, Windecker S, Zamorano JL, Zembala M. Guidelines on the management of valvular heart disease (version 2012). *Eur Heart J* 2012;**33**:2451–2496.
- Nishimura RA, Otto CM, Bonow RO, Carabello BA, Erwin JP 3rd, Fleisher LA, Jneid H, Mack MJ, McLeod CJ, O'Gara PT, Rigolin VH, Sundt TM 3rd, Thompson A. 2017 AHA/ACC focused update of the 2014 AHA/ACC Guideline for the management of patients with valvular heart disease: a report of the American College of Cardiology/American Heart Association Task Force on Clinical Practice Guidelines. *Circulation* 2017;**135**:e1159–e1195.
- Steiner T, Al-Shahi Salman R, Beer R, Christensen H, Cordonnier C, Csiba L, Forsting M, Harnof S, Klijn CJM, Krieger D, Mendelow AD, Molina C, Montaner J, Overgaard K, Petersson J, Roine RO, Schmutzhard E, Schwerdtfeger K, Stapf C, Tatlisumak T, Thomas BM, Toni D, Unterberg A, Wagner M. European Stroke Organisation (ESO) guidelines for the management of spontaneous intracerebral hemorrhage. *Int J Stroke* 2014;**9**:840–855.
- Hemphill JC, 3rd, Greenberg SM, Anderson CS, Becker K, Bendok BR, Cushman M, Fung GL, Goldstein JN, Macdonald RL, Mitchell PH, Scott PA, Selim MH, Woo D; American Heart Association Stroke Council, Council on Cardiovascular and Stroke Nursing, and Council on Clinical Cardiology. Guidelines for the Management of Spontaneous Intracerebral Hemorrhage: a Guideline for Healthcare Professionals From the American Heart Association/American Stroke Association. *Stroke* 2015;**46**:2032–2060.
- Passaglia LG, de Barros GM, de Sousa MR. Early postoperative bridging anticoagulation after mechanical heart valve replacement: a systematic review and meta-analysis. *J Thromb Haemost* 2015;**13**:1557–1567.
- Halvorsen S, Storey RF, Rocca B, Sibbing D, Ten Berg J, Grove EL, Weiss TW, Collet JP, Andreotti F, Gulba DC, Lip GYH, Husted S, Vilahur G, Morais J, Verheugt FWA, Lanos A, Al-Shahi Salman R, Steg PG, Huber K; Thrombosis ESCWG. Management of antithrombotic therapy after bleeding in patients with coronary artery disease and/or atrial fibrillation: expert consensus paper of the European Society of Cardiology Working Group on Thrombosis. *Eur Heart J* 2017;**38**:1455–1462.
- Chandra D, Gupta A, Grover V, Kumar Gupta V. When should you restart anticoagulation in patients who suffer an intracranial bleed who also have a prosthetic valve? *Interact Cardiovasc Thorac Surg* 2013;**16**:520–523.
- Alkherayf F, Xu Y, Gandara E, Westwick H, Moldovan ID, Wells PS. Timing of vitamin K antagonist re-initiation following intracranial hemorrhage in mechanical heart valves: systematic review and meta-analysis. *Thromb Res* 2016;**144**:152–157.
- Sembi JA, Gerner ST, Volbers B, Bobinger T, Lucking H, Kloska SP, Schwab S, Huttner HB, Kuramatsu JB. Severity assessment in maximally treated ICH patients: the max-ICH score. *Neurology* 2017;**89**:423–431.
- Chakravarty T, Sondergaard L, Friedman J, De Backer O, Berman D, Kofoed KF, Jiliahawi H, Shiota T, Abramowitz Y, Jorgensen TH, Rami T, Israr S, Fontana G, de Knecht M, Fuchs A, Lyden P, Trento A, Bhatt DL, Leon MB, Makkar RR, Ramzy D, Cheng W, Siegel RJ, Thomson LM, Mangat G, Hariri B, Sawaya FJ, Iversen HK; RESOLVE, SAVORY Investigators. Subclinical leaflet thrombosis in surgical and transcatheter bioprosthetic aortic valves: an observational study. *Lancet* 2017;**389**:2383–2392.
- Hemphill JC, Bonovich DC, Besmertis L, Manley GT, Johnston SC, Tuhim S. The ICH score: a simple, reliable grading scale for intracerebral hemorrhage. *Stroke* 2001;**32**:891–897.
- Huttner HB, Steiner T, Hartmann M, Kohmann M, Juettler E, Mueller S, Wikner J, Meyding-Lamade U, Schramm P, Schwab S, Schellinger PD. Comparison of ABC/2 estimation technique to computer-assisted planimetric analysis in warfarin-related intracerebral parenchymal hemorrhage. *Stroke* 2006;**37**:404–408.
- Brott T, Broderick J, Kothari R, Barsan W, Tompkins T, Sauerbeck L, Spilker J, Duldner J, Khoury J. Early hemorrhage growth in patients with intracerebral hemorrhage. *Stroke* 1997;**28**:1–5.
- Sherman DG, Albers GW, Bladin C, Fieschi C, Gabbai AA, Kase CS, O'Riordan W, Pineo GF; PREVAIL Investigators. The efficacy and safety of enoxaparin versus unfractionated heparin for the prevention of venous thromboembolism after acute ischaemic stroke (PREVAIL Study): an open-label randomised comparison. *Lancet* 2007;**369**:1347–1355.
- Meurin P, Tabet JY, Weber H, Renaud N, Ben Driss A. Low-molecular-weight heparin as a bridging anticoagulant early after mechanical heart valve replacement. *Circulation* 2006;**113**:564–569.
- Kappetein AP, Head SJ, Genereux P, Piazza N, van Mieghem NM, Blackstone EH, Brott TG, Cohen DJ, Cutlip DE, van Es GA, Hahn RT, Kirtane AJ, Krucoff MW, Kodali S, Mack MJ, Mehran R, Rodes-Cabau J, Vranckx P, Webb JG, Windecker S, Serruys PW, Leon MB. Updated standardized endpoint definitions for transcatheter aortic valve implantation: the Valve Academic Research Consortium-2 consensus document. *Eur Heart J* 2012;**33**:2403–2418.
- Myocardial infarction redefined—a consensus document of The Joint European Society of Cardiology/American College of Cardiology Committee for the redefinition of myocardial infarction. *Eur Heart J* 2000;**21**:1502–1513.
- Konstantinides SV, Torbicki A, Agnelli G, Danchin N, Fitzmaurice D, Galie N, Gibbs JS, Huisman MV, Humbert M, Kucher N, Lang I, Lankeit M, Lekakis J, Maack C, Mayer E, Meneveau N, Perrier A, Pruszczyk P, Rasmussen LH, Schindler TH, Svtil P, Vonk Noordegraaf A, Zamorano JL, Zompatori M; Task Force for the Diagnosis and Management of Acute Pulmonary Embolism of the European Society of Cardiology (ESC). 2014 ESC guidelines on the diagnosis and management of acute pulmonary embolism. *Eur Heart J* 2014;**35**:3033–3069, 3069a–3069k.
- Hanley DF, Lane K, McBee N, Ziai W, Tuhim S, Lees KR, Dawson J, Gandhi D, Ullman N, Mould WA, Mayo SW, Mendelow AD, Gregson B, Butcher K, Vespa P, Wright DW, Kase CS, Carhuapoma JR, Keyl PM, Diener-West M, Muschelli J, Betz JF, Thompson CB, Sugar EA, Yenokyan G, Janis S, John S, Harnof S, Lopez GA, Aldrich EF, Harrigan MR, Ansari S, Jallo J, Caron JL, LeDoux D, Adeoye O, Zuccarello M, Adams HP Jr, Rosenblum M, Thompson RE, Awad IA; CLEAR III Investigators. Thrombolytic removal of intraventricular haemorrhage in treatment of severe stroke: results of the randomised, multicentre, multiregion, placebo-controlled CLEAR III trial. *Lancet* 2017;**389**:603–611.
- Rassen JA, Shelat AA, Myers J, Glynn RJ, Rothman KJ, Schneeweiss S. One-to-many propensity score matching in cohort studies. *Pharmacoepidemiol Drug Saf* 2012;**21**:69–80.
- Flibotte JJ, Hagan N, O'Donnell J, Greenberg SM, Rosand J. Warfarin, hematoma expansion, and outcome of intracerebral hemorrhage. *Neurology* 2004;**63**:1059–1064.
- Flaherty ML, Tao H, Haverbusch M, Sekar P, Kleindorfer D, Kissela B, Khatri P, Stettler B, Adeoye O, Moomaw CJ, Broderick JP, Woo D. Warfarin use leads to larger intracerebral hematomas. *Neurology* 2008;**71**:1084–1089.
- Qureshi AI, Mendelow AD, Hanley DF. Intracerebral haemorrhage. *Lancet* 2009;**373**:1632–1644.
- Sandercock PA, Counsell C, Kane EJ. Anticoagulants for acute ischaemic stroke. *Cochrane Database Syst Rev* 2015;CD000024.
- The International Stroke Trial (IST): a randomised trial of aspirin, subcutaneous heparin, both, or neither among 19435 patients with acute ischaemic stroke. International Stroke Trial Collaborative Group. *Lancet* 1997;**349**:1569–1581.
- Crawley F, Bevan D, Wren D. Management of intracranial bleeding associated with anticoagulation: balancing the risk of further bleeding against thromboembolism from prosthetic heart valves. *J Neurol Neurosurg Psychiatry* 2000;**69**:396–398.
- Alkherayf F, Xu Y, Westwick H, Moldovan ID, Wells PS. Timing of anticoagulant re-initiation following intracerebral hemorrhage in mechanical heart valves: survey of neurosurgeons and thrombosis experts. *Clin Neurol Neurosurg* 2017;**154**:23–27.

35. Cannegieter SC, Torn M, Rosendaal FR. Oral anticoagulant treatment in patients with mechanical heart valves: how to reduce the risk of thromboembolic and bleeding complications. *J Intern Med* 1999;**245**:369–374.
36. Le Tourneau T, Lim V, Inamo J, Miller FA, Mahoney DW, Schaff HV, Enriquez-Sarano M. Achieved anticoagulation vs prosthesis selection for mitral mechanical valve replacement: a population-based outcome study. *Chest* 2009;**136**:1503–1513.
37. Laplace G, Lafitte S, Labeque JN, Perron JM, Baudet E, Deville C, Roques X, Roudaut R. Clinical significance of early thrombosis after prosthetic mitral valve replacement: a postoperative monocentric study of 680 patients. *J Am Coll Cardiol* 2004;**43**:1283–1290.
38. Biffi A, Kuramatsu JB, Leasure A, Kamel H, Kourkoulis C, Schwab K, Ayres AM, Elm J, Gurol ME, Greenberg SM, Viswanathan A, Anderson CD, Schwab S, Rosand J, Testai FD, Woo D, Huttner HB, Sheth KN. Oral anticoagulation and functional outcome after intracerebral hemorrhage. *Ann Neural* 2017;**82**:755–765.
39. Korompoki E, Filippidis FT, Nielsen PB, Del Giudice A, Lip GYH, Kuramatsu JB, Huttner HB, Fang J, Schulman S, Marti-Fabregas J, Gathier CS, Viswanathan A, Biffi A, Poli D, Weimar C, Malzahn U, Heuschmann P, Veltkamp R. Long-term antithrombotic treatment in intracranial hemorrhage survivors with atrial fibrillation. *Neurology* 2017;**89**:687–696.
40. Pennlert J, Overholser R, Asplund K, Carlberg B, Van Rompaye B, Wiklund PG, Eriksson M. Optimal timing of anticoagulant treatment after intracerebral hemorrhage in patients with atrial fibrillation. *Stroke* 2017;**48**:314–320.
41. Nishimura RA, Otto CM, Bonow RO, Carabello BA, Erwin JP 3rd, Guyton RA, O’Gara PT, Ruiz CE, Skubas NJ, Sorajja P, Sundt TM 3rd, Thomas JD; ACC/AHA Task Force Members. 2014 AHA/ACC Guideline for the management of patients with valvular heart disease: executive summary: a report of the American College of Cardiology/American Heart Association Task Force on Practice Guidelines. *Circulation* 2014;**129**:2440–2492.
42. Flint AC, Lingamneni R, Rao VA, Chan SL, Ren X, Pombra J, Hemphill JC 3rd, Bonow RO. Risks of thrombosis and rehemorrhage during early management of intracranial hemorrhage in patients with mechanical heart valves. *J Am Coll Cardiol* 2015;**66**:1738–1739.